

# Stahlfix Metoset P-SF

## Stahlfix Metoset P-SF



480g



260g

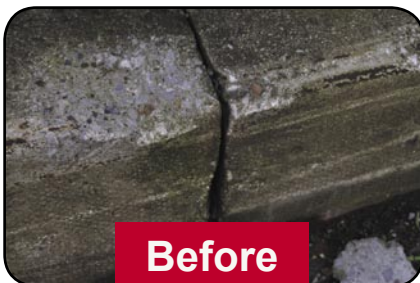
### Description

Stahlfix Metoset PSF is a ready to use product for repairing cracks and concrete, and is also ideal as a bonding agent between materials. It is based on a high quality polyester resin and it is characterized by its high compressive strength and tensile strength.

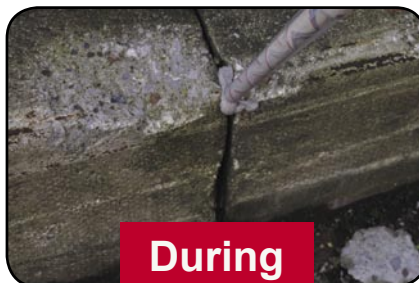
### Avantages

- Quick and simple to use indoors and outdoors
- Ready to use
- Repair of large or small cracks in concrete and jagged edges masonry, etc..
- Ideal for bonding of almost any material
- Fast curing
- Operating Temperature: 5-40 ° C
- May be painted after drying

### Examples of application



Before



During



After



# Stahlfix Metoset P-SF

## How to use

- Prepare the crack or the repair area by removing the free and friable concrete, moisture and dust.
- Unscrew the cap, attach the mixing nozzle supplied, insert the cartridge into a “silicone” tool.
- Extrude the substance directly into the crack or the repair area, smooth, paint after drying.
- Gel time: 20 mins at 20 ° C.
- Curing time: 1 hour at 20 ° C.



## What you need to know

- Tools can be cleaned with water after use.
- Protection of the environment: - extrude and cure all of the product (extrude all of the resin before disposal).
- Storage between 5 and 25 ° C, avoid direct and prolonged exposure to sunlight.
- Expiry Date: printed on the cartridge.

