

SOGIVA

ASPHALT FIXING **STAHLFIX**



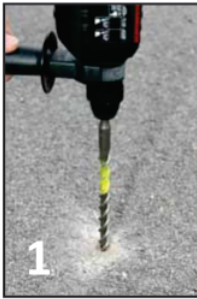
For Use with Stahlfix EASF + Chemical Anchoring Resin



- Fixing point re-usable with full strength
- Fully installed in minutes • Clean and tidy
 - The solution for a temporary fixing
- Strength of tarmac & asphalt is fully maintained
- Roads, Car parks, Playgrounds, Industrial, Home.

The most durable asphalt fixing

ASPHALT FIXING STAHLFIX



Asphalt Fixing **Stahlfix** is an intuitive system for creating a removable fixing, primarily designed for tarmac and asphalts and also suitable for concrete or solid substrates. **Stahlfix** does not impart stress forces its fixing surroundings during installation therefore is totally durable as the integrity of the substrate is left intact.

The fixing provides permanent or temporary installations and the fixing hole itself is used many times without disturbing the anchoring, or its durability.



Technical Information :

M10 x 70 - Ø 14mm



M10 x 100 - Ø 14mm



M12 x 70 - Ø 16mm

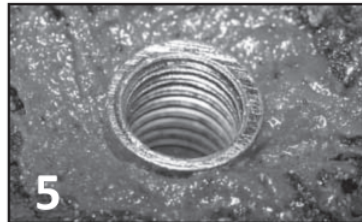


M12 x 100 - Ø 16mm

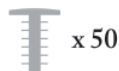


Available sizes

- M10 x 70mm / 100mm
- M12 x 70mm / 100mm



50pcs Per Box



Order Codes

- 08116 - M10 / 70
- 08117 - M10 / 100
- 08118 - M12 / 70
- 08119 - M12 / 100

The most durable asphalt fixing